

WE ARE SPECIALIST IN ANCHORING



Features >>>

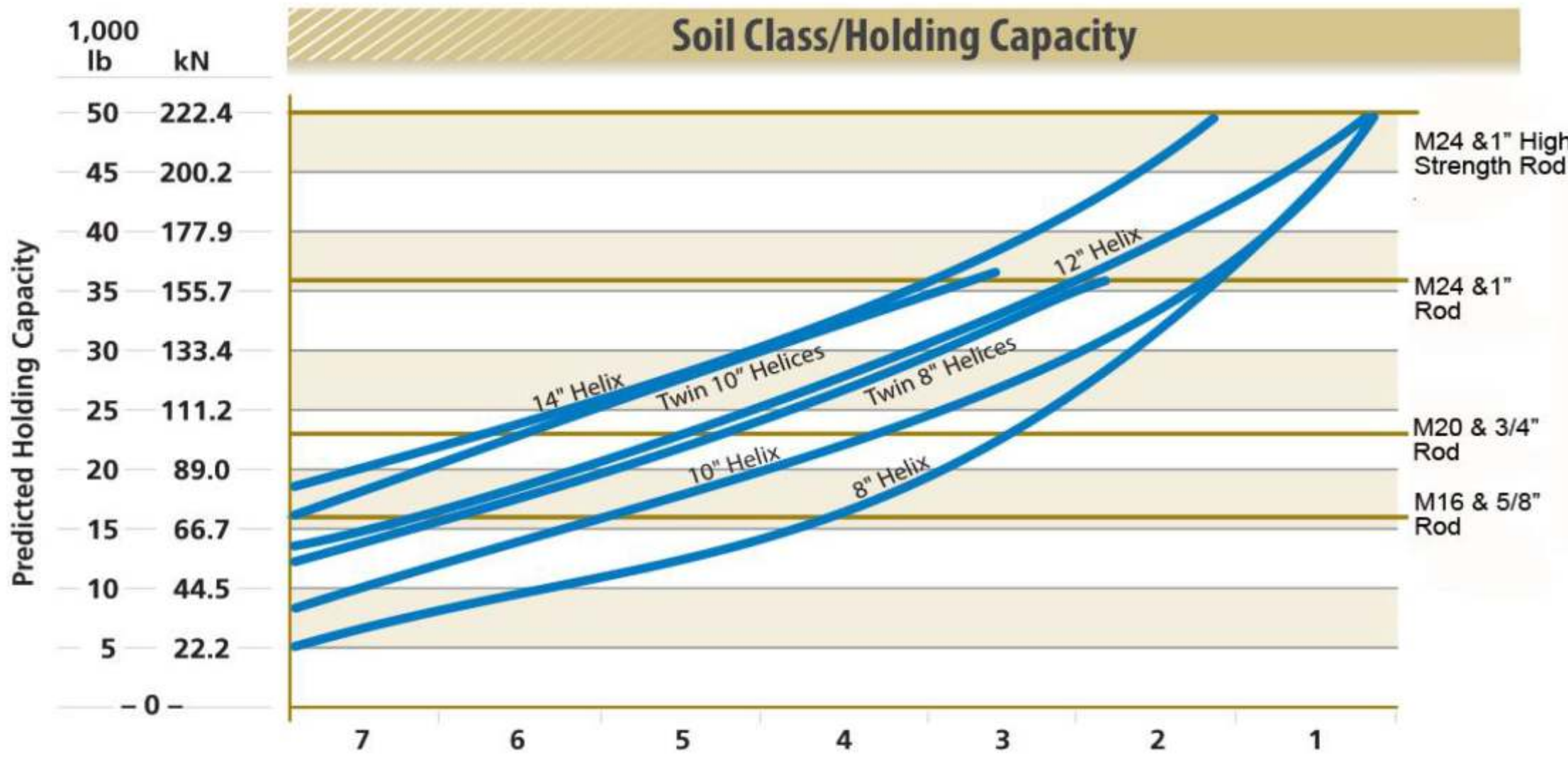
- The most versatile lightweight solutions
- Labor and time saving device
- Environmentally friendly
- Higher potential loads
- No concrete required
- Fewer drive rods

Soil Classification Data

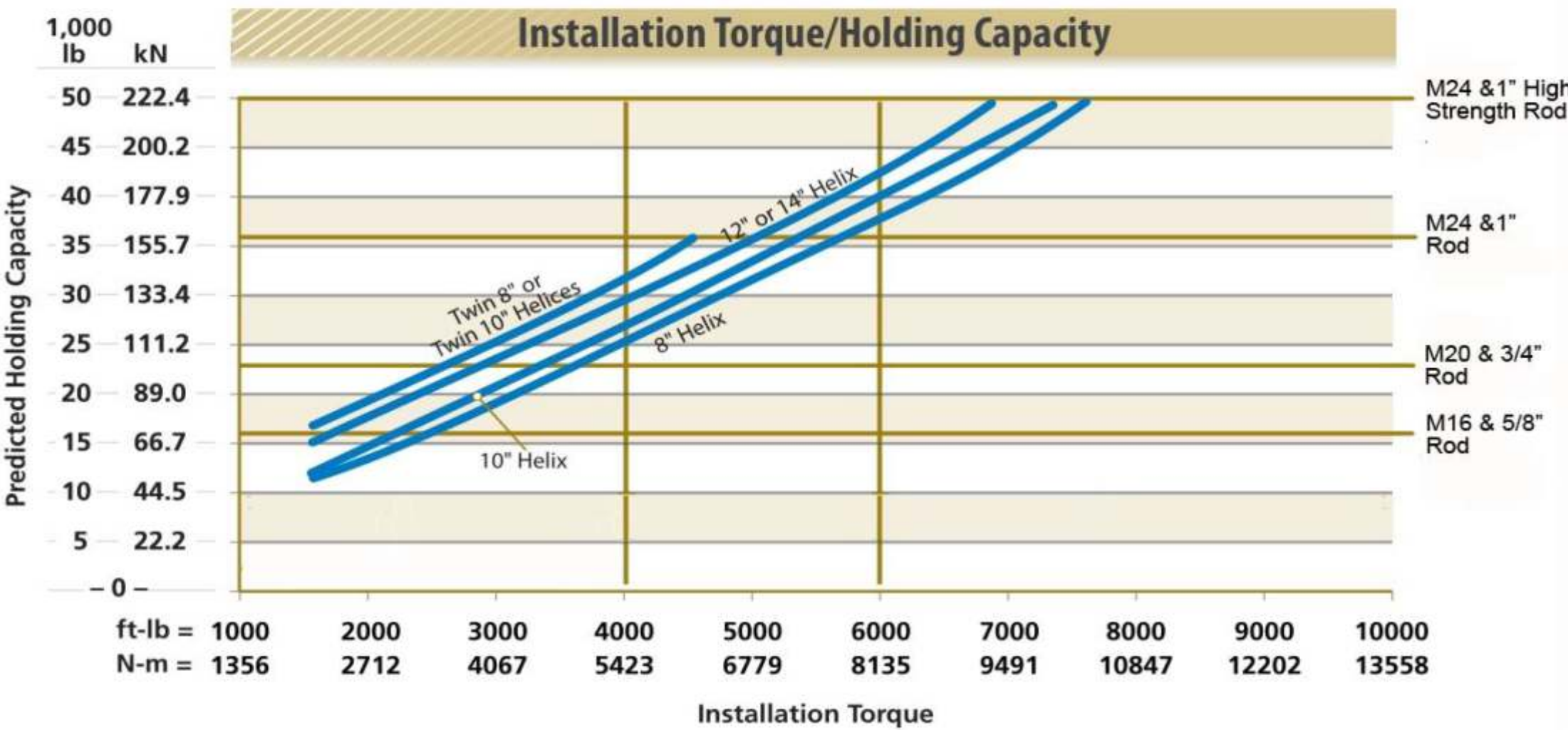
Class	Common Soil Type Description	Geological Soil Classification	Probe Values ft-lb (nm)	Typical Blow Count "N" per ASTM-D1586
0	Sound hard rock, unweathered (bedrock)	Granite, Basalt, Massive Limestone	—	—
1	Very dense and/or cemented sands; coarse gravel and cobbles	Caliche, (Nitrate-bearing gravel/rock)	Over 60 (85 - 181)	60-100+
2	Dense fine sands; very hard silts and clays (may be preloaded)	Basal till; boulder clay; caliche; weathered laminated rock	Over 50 (68 - 85)	45-60
3	Dense sands and gravel; hard silts and clays	Glacial till; weathered shales, schist, gneiss and siltstone	42 - 50 (56 - 68)	35-50
4	Medium dense sand and gravel; very stiff to hard silts and clays	Glacial till; hardpan; marls	33 - 42 (45 - 56)	24-40
5	Medium dense coarse sands and sandy gravels; stiff to very stiff silts and clays	Saprolites, residual soils	25 - 33 (34 - 45)	14-25
6	Loose to medium dense fine to coarse sands to stiff clays and silts	Dense hydraulic fill; compacted fill; residual soils	17 - 25 (23 - 34)	7-14
7 ⁽¹⁾	Loose fine sands; Alluvium; loess; medium - stiff and varied clays; fill	Flood plain soils; lake clays; adobe; gumbo, fill	8 - 17 (11 - 23)	4-8
8 ⁽¹⁾	Peat, organic silts; inundated silts, fly ash very loose sands, very soft to soft clays	Miscellaneous fill, swamp marsh	Under 8 (0 - 11)	0-5

NOTE: Class 1 soils are difficult to probe consistently and the ASTM blow count may be of questionable value.
⁽¹⁾ It is advisable to install anchors deep enough, by the use of extensions, to penetrate a Class 5 or 6, underlying the Class 7 or 8 soils.

Anchor selection



Anchor selection



Power Drive Socket SA



Helix Size	Small Hub (2-1/4" square inside)			Large Hub (2-1/2" square inside)				
	8000FT.-LB.	10000FT.-LB.	10000FT.-LB. Sharpened leading edge	8000FT.-LB.	10000FT.-LB.	10000FT.-LB. Sharpened leading edge	15000FT.-LB.	10000FT.-LB. Sharpened leading edge
6"	SA-2.25-06							
7"	SA-2.25-07							
8"	SA-2.25-08	SA-2.25-08-HD	SA-2.25-08-HDS	SA-2.5-08	SA-2.5-08-HD	SA-2.5-08-HDS	SA-2.5-08-SHD	SA-2.5-08-SHDS
10"	SA-2.25-10	SA-2.25-10-HD	SA-2.25-10-HDS	SA-2.5-10	SA-2.5-10-HD	SA-2.5-10-HDS	SA-2.5-10-SHD	SA-2.5-10-SHDS
12"	SA-2.25-12	SA-2.25-12-HD	SA-2.25-12-HDS	SA-2.5-12	SA-2.5-12-HD	SA-2.5-12-HDS	SA-2.5-12-SHD	SA-2.5-12-SHDS
14"	SA-2.25-14	SA-2.25-14-HD	SA-2.25-14-HDS	SA-2.5-14	SA-2.5-14-HD	SA-2.5-14-HDS	SA-2.5-14-SHD	SA-2.5-14-SHDS
18"	SA-2.25-18			SA-2.5-18				

*Thread: 5/8" 3/4" 1" M16 M20 M24

*Color: Blue

Power Drive Shaft SA



Helix Size	Small shaft (1.375" solid square)		Large shaft (1-1/2" solid square)			
	6000FT.-LB.	6000FT.-LB. Sharpenned leading edge	6000FT.-LB.	6000FT.-LB. Sharpenned leading edge	7000FT.-LB.	70000FT.-LB. Sharpenned leading edge
8"	SA-1.375-08	SA-1.375-08-S	SA-1.5-08	SA-1.5-08-S	SA-1.5-08-HD	SA-1.5-08-SHDS
10"	SA-1.375-10	SA-1.375-10-S	SA-1.5-10	SA-1.5-10-S	SA-1.5-10-HD	SA-1.5-10-SHDS
12"	SA-1.375-12	SA-1.375-12-S	SA-1.5-12	SA-1.5-12-S	SA-1.5-12-HD	SA-1.5-12-SHDS
14"	SA-1.375-14		SA-1.5-14		SA-1.5-14-HD	
4"-4"	SA-1.375-04D		SA-1.5-04D		SA-1.5-04D-HD	
8"-8"	SA-1.375-08D	SA-1.375-08DS	SA-1.5-08D	SA-1.5-08DS	SA-1.5-08D-HD	SA-1.5-08D-HDS
10"-10"	SA-1.375-10D	SA-1.375-10DS	SA-1.5-10D	SA-1.5-10DS	SA-1.5-10D-HD	SA-1.5-10D-HDS

*Thread: 5/8" 3/4" 1" M16 M20 M24

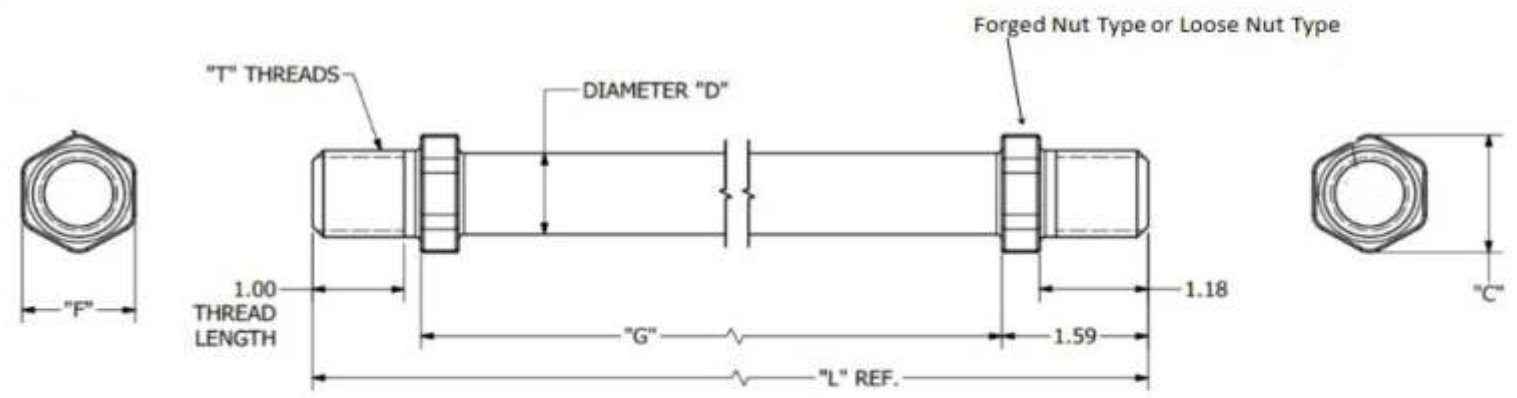
*Color: Blue, Green

Thimble eye nut



Type	Tap	Material and Rate
Single Thimble Eye Nut	For 5/8" 3/4" 1" M16 M20 M24 anchor rod	Galvanized Steel. 144KN
Double Thimble Eye Nut	For 5/8" 3/4" 1" M16 M20 M24 anchor rod	Galvanized Steel. 144KN
Triple Thimble Eye Nut	For 5/8" 3/4" 1" M16 M20 M24 anchor rod	Galvanized Steel. 144KN

Anchor rod



size	UltimateStrength, KN.	D	G	L	T	F	C
5/8*3-1/2' 7'	100KN	9/16	39-3/32 80-13/16	41-13/16 83-9/16	43/64-11UNS-2A	1	1.13
3/4*3-1/2' 7'	144KN	11/16	39-3/32 80-13/16	41-13/16 83-9/16	1-8UNC-2A	1.23	1.36
1"*3-1/2' 7'	200KN	15/16	39-3/32 80-13/16	41-13/16 83-9/16	1-8UNC-2A	1.23	1.36
M16*2133 2433	100KN	14.6		2133mm/2433mm	M16	N	N
M20*2133 2433	144KN	17.46		2133mm/2433mm	M20	N	N
M24*2133/2433	200KN	22mm		2133mm/2433mm	M24	N	N

Application



vehicle canopy construction



Power line construction



Crop protection canopy Construction



Green House Construction



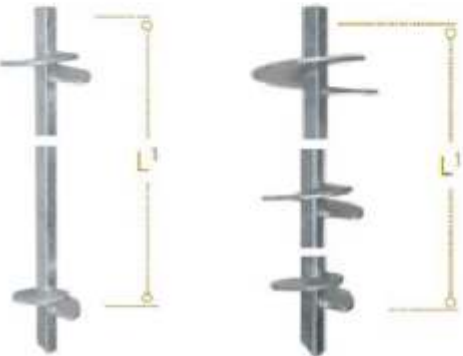
Multi helix anchor head apply for screw piling solution:

- * Light Poles
- * Bridges & Walkways
- * Surveillance Camera Towers
- * Solar Panel Supports
- * New Homes & Housing Developments
- * Knock Down Rebuild Projects
- * Rectification
- * Signage & Billboards
- * Pipe & Conveyor Belt Supports
- * Energy Transmission Towers
- * Retaining Walls
- * Retirement Villages
- * Home Extensions



Square Shaft multi helix anchor; Extension and guy adaptor

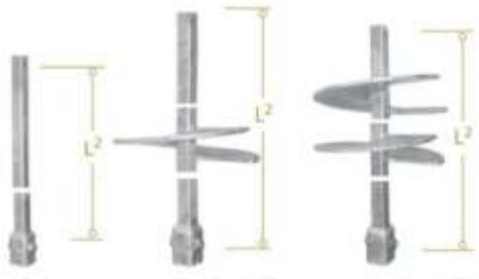
Square shaft multi helix anchor



Ratings				
Mechanical Properties	1 1/4 Square Shaft	1 1/2" Square Shaft	2" Square Shaft	2 1/4" Square Shaft
Max Installation Torque	40,00 ft-lb	5700 ft-lb	16,000 ft-lb	21,000 ft-lb
Min Ultimate Tension Strength	40KIP	57KIP	150,000 lb	200,000 lb
Lead Section - HDG				
Helix Configuration Inches	1 1/4 Square Shaft	1 1/2 Square Shaft	2 Square Shaft	2 1/4 Square Shaft
	L1 (Inc)	L1 (Inc)	L1 (Inc)	L1 (Inc)
8		60, 84		
10	60	60, 84		
12	60	60, 84		
14	60	60, 84		
6 & 6		36		
6 & 8		36, 84		
8 & 10	60	36, 84, 120		
10 & 12	60	42		
14 & 14		84	60	54
8, 10 & 12	60	60, 84	60	75
10, 12 & 14	84	84, 120	84	
12, 14 & 16	120	120	122	114

Square Shaft multi helix anchor; Extension and guy adaptor

Square shaft multi helix anchor extension



Ratings				
Mechanical Properties	1½" Square Shaft	1¾" Square Shaft	2" Square Shaft	2¼" Square Shaft
Max Installation Torque	5700 ft-lb	10,500 ft-lb	16,000 ft-lb	21,000 ft-lb
Min Ultimate Tension Strength	57KIP	100,000 lb	150,000 lb	200,000 lb
Extension - HDG				
Helix Configuration Inches	1½" Square Shaft	1¾" Square Shaft	2" Square Shaft	2¼" Square Shaft
	L2 (Inc)	L2(Inc)	L2 (Inc)	L2 (Inc)
None	42	37	37	33
None	60	59	58	60
None	84	80	80	80
None	120 (10FT)	124	123	120
Single 12" Helix	60	48	45	39
Single 14" Helix	42, 60,			
Twin 8" Helices	60	80	80	78
Triple 8" Helices	84	124	123	120

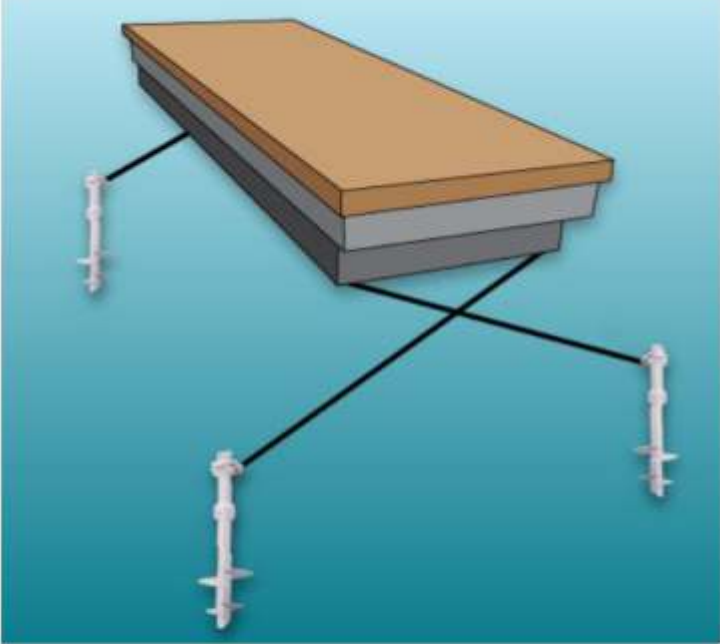
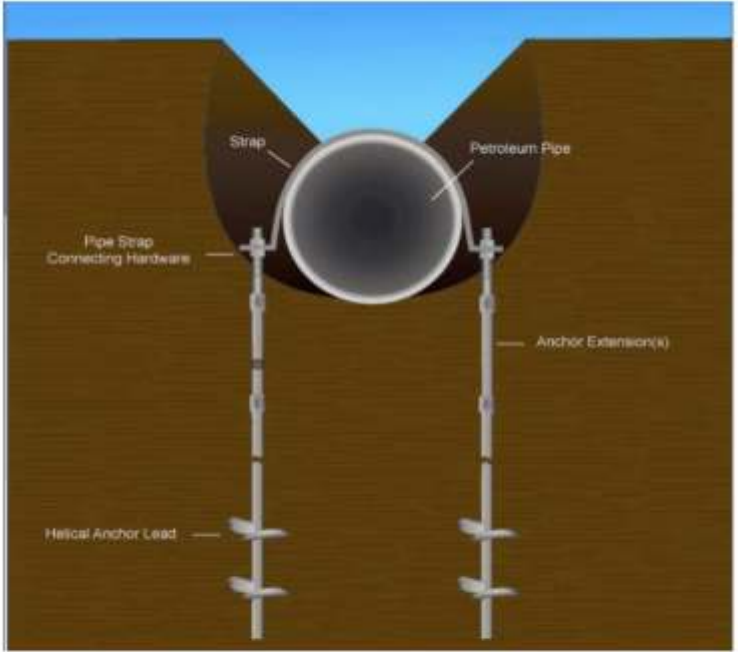
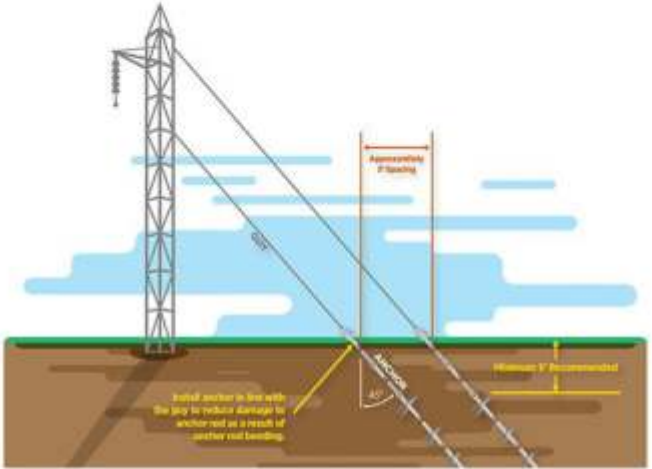
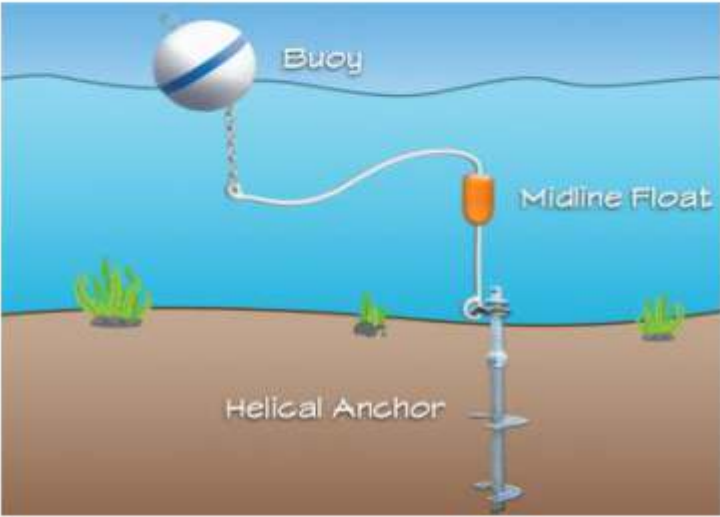
Square Shaft multi helix anchor; Extension and guy adaptor



Guy adaptor	
Helix Configuration Inches	1½" Square Shaft
Min Ultimate Tension Strength	320KN
	L (mm)
Thimble eye adapter	243
Twineye Adapter	243
Tripleye Adapter	244.5

Guy adaptor			
Helix Configuration Inches	1¾" Square Shaft	2" Square Shaft	2¼" Square Shaft
Min Ultimate Tension Strength	10000KN	10000KN	10000KN
	L (mm)	L (mm)	L (mm)
Thimble eye adapter	243	243	
Twineye Adapter	243	243	243
Tripleye Adapter	244.5	244.5	244.5

Application



Percussion earth anchor



Item:Antaeus 1.5k-3.5KN
Weight: 0.134KGS
Soil Bearing area: 1521mm²
Ultimate strength: 3.5KN
Cable size: 3mm, 4mm
Dimension: 88*28.5*44.5mm
Mantaray: 40



Item: Antaeus 3k-8KN
Weight: 0.23KGS
Soil Bearing area: 3204mm²
Ultimate strength: 8KN
Cable size: 4mm
Dimension: 123*39.5*29.3mm
Duckbill: 68



Item:Antaeus 3K-25KN
Weight: 0.33KGS
Soil Bearing area: 3199mm²
Ultimate strength: 25KN
Yoke size: M10
Dimension:122*46.3*29.3mm
Mantaray: 68



Item:Antaeus 6K-30KN
Weight: 0.65KGS
Soil Bearing area: 5942mm²
Ultimate strength: 30KN
Cable size: 6mm
Dimension:160*59*43mm
Duckbill: 88



Item:Antaeus 6K-40KN
Weight: 0.58KGS
Soil Bearing area: 5942mm²
Ultimate strength: 40KN
Yoke size: M12
Dimension:160*43*69mm
Mantaray: 88



Item:Antaeus 11K-100KN
Weight: 2.2KGS
Soil Bearing area: 11390mm²
Ultimate strength: 100KN
Yoke size: M16, M20
Dimension:211*61*98mm
Mantaray: MR4-II

Percussion earth anchor



Item:Antaeus 16K-50KN
Weight: 2.34KGS
Soil Bearing area: 16077mm²
Ultimate strength: 50KN
Cable size: 8mm
Dimension:360*80*60mm
Duckbill: 138



Item: Antaeus 20K-100KN
Weight: 2.61KGS
Soil Bearing area: 19765mm²
Ultimate strength: 100KN
Yoke size: M16, M20
Dimension: 249.4*92-8mm
Mantaray: MR-3



Item:Antaeus 30K-200KN
Weight: 5.11KGS
Soil Bearing area: 30062mm²
Ultimate strength: 200KN
Yoke size: M20 M24
Dimension:329*104-10mm
Mantaray: MR-2



Item:Antaeus 47K-200KN
Weight: 6.45KGS
Soil Bearing area: 47047mm²
Ultimate strength: 200KN
Yoke size: M20 M24
Dimension:211*178-10mm
Mantaray: MR-1



Item:Antaeus 95K-200KN
Weight: 10.5KGS
Soil Bearing area: 95223mm²
Ultimate strength: 200KN
Yoke size: M20 M24
Dimension:403*318-10mm
Mantaray: MR-SR-II



Item:Antaeus 235K-200KN
Weight: 31KGS
Soil Bearing area: 235803mm²
Ultimate strength: 200KN
Yoke size: M24
Dimension: 467*650-14mm
Mantaray: MK-B

Percussion earth anchor



Wire: 3mm, 4mm, 6mm, 8mm
Wire Material: SS304, Galvanized Steel
Thimble eye: 1/4, 3/8

Anchor rod: M10, M16, M20, M24, 1Inc
Material: Galvanized Steel
Anchor rod Type: Forged nut or loose nut
Swivel Eye
Anchor plate: 150*150*8mm 150*150*10mm
Hex Coupler Galvanized: M10, M12
Hex Nut: M10, M12
Flat washer Galvanized: M10, M12

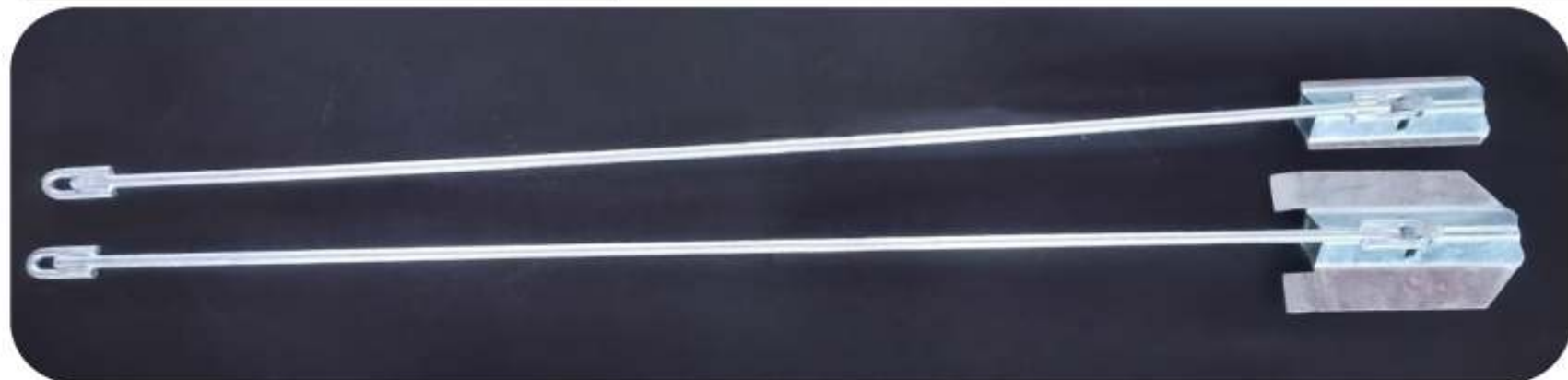


Percussion earth anchor



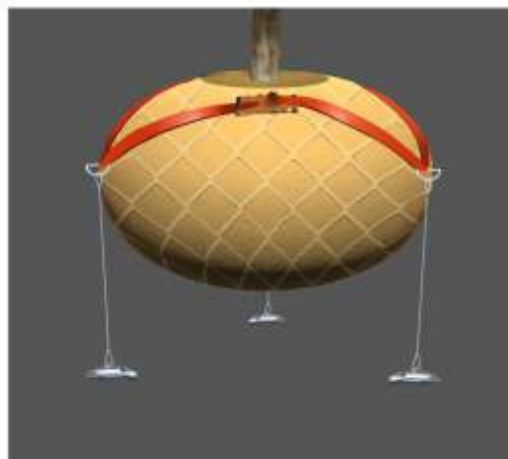
Model	Impact driven soil anchor for tensile loads
Size	4.97 (126.2mm)*1.22 (31.0mm)*1.64 (41.7mm)
Ultimate Strength	1650lb (7.3KN)
Soil Bearing Surface Area	5.07in ² (32.7cm ²)
Material	Carbon steel or aluminum
Available cable sizes	1/8in - 3/16in (3.2mm-4.8mm)
Typical installation depth	30-40in (762.0 to 1066.8mm)

Model	Light capacity anchor set
Anchor head	20K-100KN 30K-100KN 50K-100KN 95K-100KN
Anchor rod	1700mm or as customer's requirement

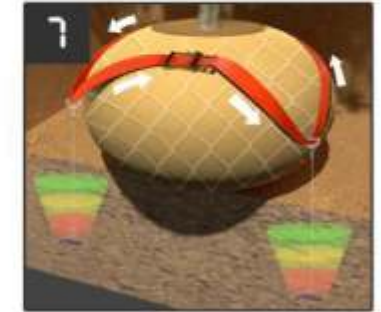
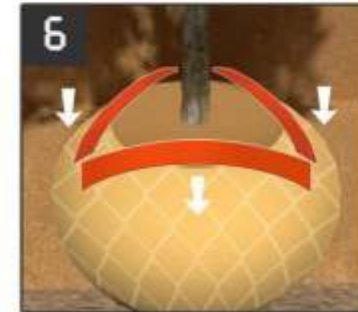
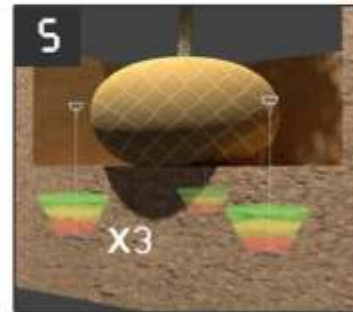
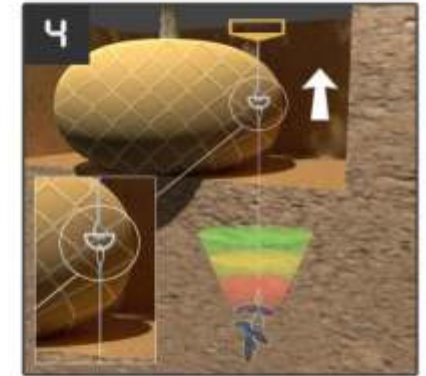
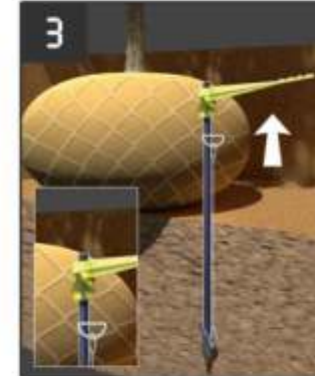
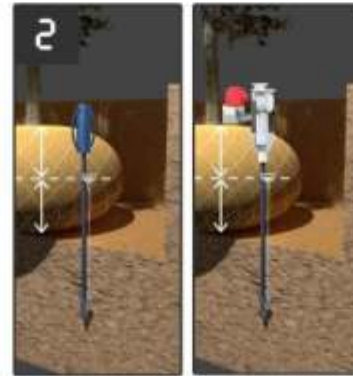
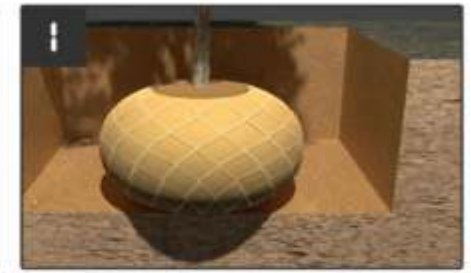
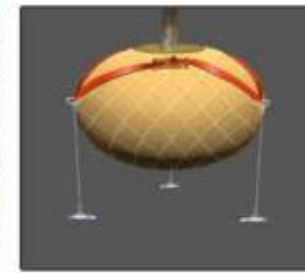


Root ball earth anchor kit

Model	RBK40	RBK68	RBK88	RBK16-50
Kit Content	3pcs L earth anchors wire 3pcs 3mm per anchor attached with 1.5m length 3 D ring 1pc 25X2 strap with ratchet	3pcs 3-8KN earth anchors wire 3pcs 4mm per anchor attached with 1.5m length 3 D ring 1pc 25X6 strap with ratchet	3pcs 6-30KN earth anchors wire 3pcs 5mm per anchor attached with 1.5m length 3 D ring 1pc 35X6.4 strap with ratchet	3pcs Anchors with dring one 38*6.4m Strap with ratchet wire 8mm*1.5m
Soil Bearing Area One Anchor	1521mm ²	3204mm ²	5942mm ²	16077mm ²
Ultimate Strength	3.5KN	8KN	30KN	50KN
Apply To	For tree up to 2in dia	For tree up to 3in dia	For tree up to 6in dia	For tree up to 11in dia



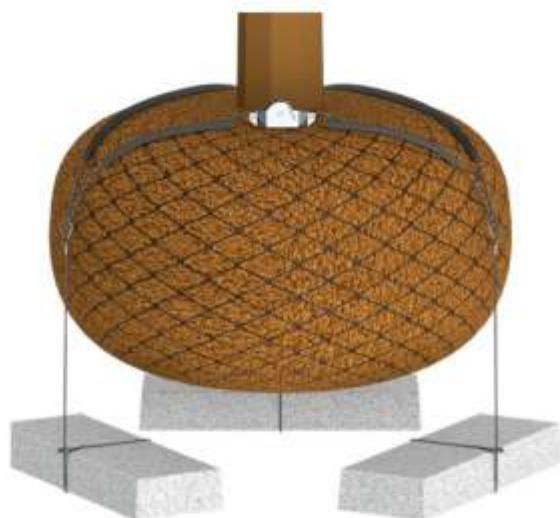
Percussion earth anchor



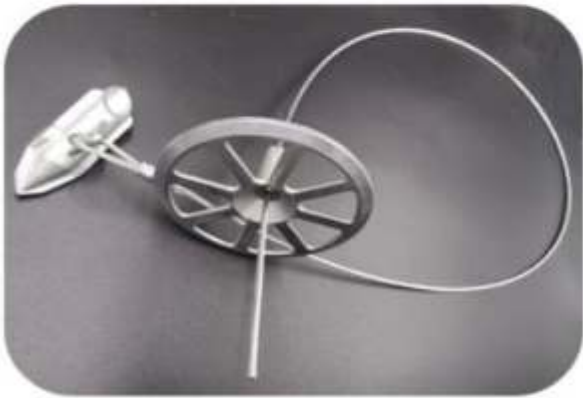
Root ball earth anchor kit INSTALLATION GUIDE

Root ball earth anchor Dead Man kit

Model	DMK5	DMK10	DMK20
Kit Content	3*Wire Slings, 4m of Galv Wires 5mm 1*Ratchet Tensioner 3*Rootball Protector	3*Wire Slings, 5m of Galv Wires 6mm 1*Ratchet Tensioner 3*Rootball Protector	3*Wire Slings, 8m of Galv Wires 8mm 1*Ratchet Tensioner 3*Rootball Protector
Apply to	For tree 2.5m-4.5m	For tree 4.5m-7.5m	For tree 7.5m-12m



Percussion earth anchor

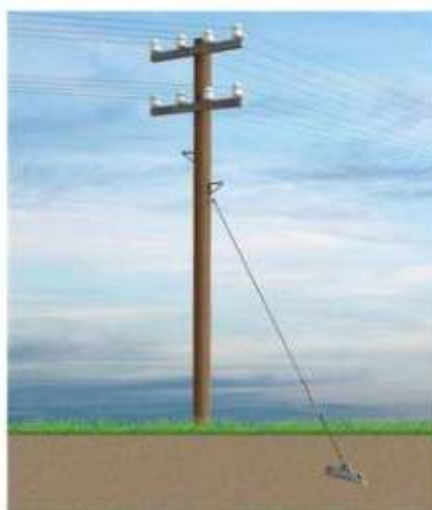


Model	Errosion Control EC-110 Anchor Assembly
Kit Content	1PCS anchors Wire Dia 3mm of 48inch per anchor attached 1PC selflock anchor plate
Ultimate strength	Maximum Working Load(1) 450kg Ultimate Assembly Strength 500kg Ultimate Wire Rope Strength 815kg
Apply to	Geotechnical engineering for erosion control, soil retention & slope reinforcement.

Model	TD150Erosion Control Anchors with Turf Disks: Pack of 3 for Secure Grounding
Kit Content	3PCS anchor assemble (Anchor L160.58mm, W 41.07mm) Wire Dia 3mm of 54inch (1371.6mm) per anchor attached 1PC nylon plate of DIA1150mm 1PC selflock quick vise
Ultimate strength	30KN each anchor, Soil bearing area 5942mm ²
Apply to	Landscape fabric, erosion blankets, liners, riverbanks etc



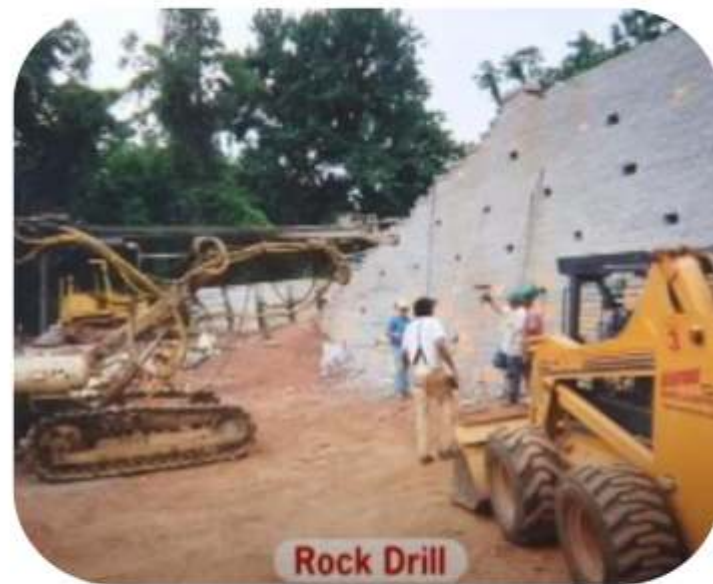
Application



Installation



Installation



Concrete free footing system



Material	Steel
Finish	Galvanized
Size	AN250 4P AN250 4P with bracket and pipe AN250 8P AN400 12P AN600 16P



No Wrench Screw Anchor



Type	Anchor	Length In	Rod Size	Weight (LB)	Installation Torque (FT-LBS)	Holding Capacity (lbs)		
						Class5	Class6	Class7
Tripleye	4"	54"	3/4"	7.84	400	4500	3000	1500
Tripleye	6"	66"	3/4"	11.27	400	6500	5000	2500
Tripleye	8"	66"	1"	21.031	1000	11000	9000	6000
Tripleye	10"	66"	1-1/4"	30.38	2300	13000	10000	7000
Tripleye	10"	96"	1-1/4"	42.14	2300	13000	10000	7000
Tripleye	14"	96"	1-1/4"	54.64	2300	16000	15000	12000
Tripleye	15"	96"	1-1/4"		2300	19000	17000	14000
Thimbleye	4"	54"	3/4"	7	400	4500	3000	1500
Thimbleye	6"	66"	3/4"	10	400	6500	5000	2500
Thimbleye	8"	66"	1"	19	1000	11000	9000	6000
Extension Rod								
Tripleye		24/36/72	3/4					
Tripleye		24/36/72	1"					
Tripleye		24/36/72	1-1/4"					



Expanding Anchor



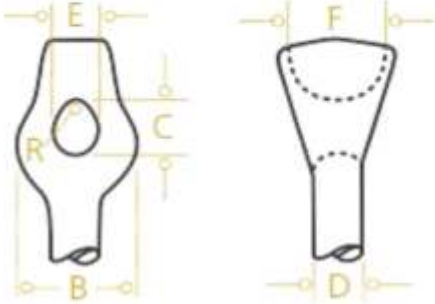
Code	Anchor Hole size	Area Sq.In	Rod Size	Weight(LB)	Surface	Holding Capacity (lbs)				
						Class3	Class4	Class5	Class6	Class7
EA6	6"	70	5/8"	5.067	P	16000	14000	11000	8500	5000
EA8	8"	135	5/8, 3/4"	8.516/9.31	P/G	26500	22000	18000	15000	10000
EA10	10"	200	1", 3/4"	19.394/19.44	P/G	31000	26500	21000	16500	12000
EA12	12"	300	1", 1-1/4"	29.3/35.672	P/G	40000	34000	26500	21500	16000

Cross Plate Anchor

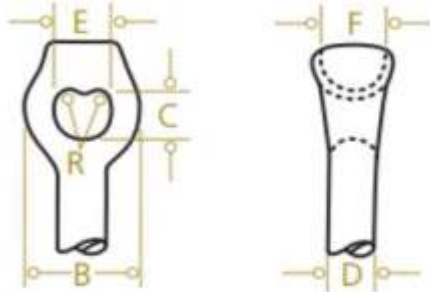


Code	Hole size	Area (IN ²)	Rod Size	Weight (KG)	Surface	Holding Capacity (lbs)				
						Class3	Class4	Class5	Class6	Class7
CPA16	16"	150	5/8", 3/4"	4.5	P/G	26500	22500	18500	14500	9500
CPA20	20"	250	5/8", 3/4"	7.2	P	34000	29000	24000	19000	14000
CPA201	20"	250	1"	7	P/G	34000	29000	24000	19000	14000
CPA243458	24"	400	5/8", 3/4"	15.8	P	45000	37000	30000	23500	18000
CPA241	24"	400	1"	15.8	P/G	45000	37000	30000	23500	18000
CPA24114	24"	400	1-1/4"	15.9	P	45000	37000	30000	23500	18000

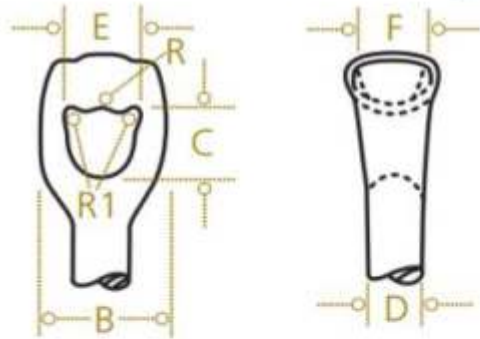
Galvanized Anchor Rods



Rod size	Length	Single Thimble Anchor rod						Strength
		D	R ⁽¹⁾	B	C	E	F	
1/2"	5' 6' 7'	1/2	3/16	1-1/4	9/16	1/2	1-3/4	10000
5/8"	5' 6' 7' 8'	5/8	1/4	1-1/2	1-1/16	9/16	1-3/8	16000
3/4"	6' 7' 8'	3/4	9/32	1-5/8	13/16	11/16	1-1/2	23000
1	8' 10'	1	13/32	2-1/16	1-1/8	15/16	1-5/8	36000

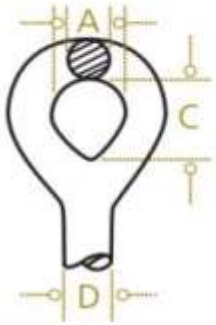


Rod size	Length	Twineye Thimble Anchor rod						Strength
		D	R ⁽¹⁾	B	C	E	F	
5/8"	6' 7' 8'	5/8	7/32	1-3/4	7/8	1-5/16	1-1/4	16000
3/4"	6' 7' 8' 9' 10'	3/4	1/4	2	1	1-1/16	1-3/8	23000
1"	8' 9' 10'	1	5/16	2-5/8	1-3/16	1-5/16	1-1/2	36000
1-1/4	10'	1-1/4	3/8	2-15/16	1-1/4	1-9/16	1-5/8	58000



Rod size	Length	Tripleye Thimble Anchor rod						Strength	
		D	R ⁽¹⁾	R ¹⁽²⁾	B	C	E		F
3/4	7' 8' 9'	3/4	1/4	7/32	2-1/2	1-11/16	1-1/2	1-1/4	23000
1	8' 10'	1	1/4	7/32	2-9/16	1-11/16	1-5/8	1-1/2	36000
1-1/4	8' 10'	1-1/4	9/32	1/4	2-7/8	1-11/16	1-11/16	1-5/8	58000

Galvanized Anchor Rods



size	Ovaleye				Strength
	D	A	B	C	
5/8*7'	1-1/4	9/16	1-1/2	2	16000
1*10'	1	7/8	1-1/2	2	36000

Expand Rock Anchor



Rod Diameter.	Rod Length.	Anchor Size	Anchor Fully Expand	Hole Size	Approx. Wt. Each Lbs.(Kg)
3/4"	15"	1-3/4"	2-3/8"	2"	5.0(2.3)
3/4"	30"	1-3/4"	2-3/8"	2"	6.8(3.1)
3/4"	53"	1-3/4"	2-3/8"	2"	9.6(4.4)
3/4"	60"	1-3/4"	2-3/8"	2"	10.5(4.8)
3/4"	72"	1-3/4"	2-3/8"	2"	11.8(5.4)
3/4"	84"	1-3/4"	2-3/8"	2"	13.5(6.1)
3/4"	96"	1-3/4"	2-3/8"	2"	14.7(6.7)
1"	30"	2-1/4"	3-1/8"	2-1/2"	11.7(5.3)
1"	53"	2-1/4"	3-1/8"	2-1/2"	17.1(7.8)
1"	72"	2-1/4"	3-1/8"	2-1/2"	21(9.5)
1"	96"	2-1/4"	3-1/8"	2-1/2"	26.7(12.1)

3/4" Rod Minimum Ultimate Strength of 23,000 pounds.
 1" Rod Minimum Ultimate Strength of 36,000 pounds.

Ground screw anchor



Material	Q235 ISO630 Fe A / DIN EN10025Fe 360 B
Length	Usual type: 1600 /1800 /2000mm (550mm-4000mm)
OD	48 /60 /68 /76 / 89 /114mm
Pipe Thickness	2.5 / 3.0 / 3.5 / 3.75 / 4.0 mm
Depth	500~3000mm
Finish	Hot dip galvanized to DIN EN ISO 1461-1999.
Top Design	Bolt, flange (or 3*M16), U type plate
Screw spacing	40 / 60 mm



Application



Dog Anchor



Material	Steel
Finish	Powder, black, green or as requirement
Size	LxWxH 15.5 x 3 x 3 inches or as requirements

